



SOROI
SAMBURU LODGE



Quick Facts

Samburu Game Reserve



We are excited to introduce you to our newly reimagined property, Soroi Samburu Lodge, formerly known as Samburu Game Lodge.

Soroi Samburu Lodge is located on the mighty Ewaso Nyiro River with scenic mountains in the backdrop.

Facilities include: Conference Room, Swimming Pool, Gift Shop, Viewing platform overlooking the river, spa.

Reservations- Contact us:

samburulodge@soroi.com or reservations@soroi.com

Tel: +254-733-928-290 or +254-732-557-714

www.soroi.com

Quick Facts



Samburu Game Reserve

Location

Airstrip
GPS Coordinates
Driving Time from Nairobi

Samburu Game Reserve
Kalama Airstrip – (50 minutes away from Lodge)
0° 34' 21.6114", 37° 32' 14.6898"
5-6 hours

Lodge Rooms

Total number of Rooms - 58 as at 2025

(Phase 1 - 27 rooms open by Feb 2025)

- 16 Standard Rooms (Twin/Double occupancy + Additional Single Bed)
- 4 Family Units (2 Rooms each, which can also be sold as superior rooms)
- 2 Superior Rooms + Outdoor Shower in each room
- 1 Executive Suite (3 Bedrooms each + with a large private terrace, plunge pool + Outdoor Shower in each room)

(Phase 2 - 31 rooms open by 01st July 2025)

- 28 Standard Rooms (Twin/Double occupancy + Additional Single Bed)
- 2 Superior Rooms + Outdoor Shower in each room)
- 1 Executive Suite (3 Bedrooms each + with a large private terrace, plunge pool + Outdoor Shower in each room)

Tour Leader / Guide Accommodation
Check In / Check Out

Yes
12:00 / 10:30

Rooms types

Standard Rooms

Each room has a Queen size or Twin Bed. En-suite bathroom. Indoor shower. Verandah or balcony

Family Room / Superior Room

Spacious Adjoining en-suite room + Additional Single Bed + Outdoor Shower

Dining

Dietary Options
Private Dining

Kosher, Halaal and other special dietary requests available on request
On Request

Facilities

Wi-Fi
24 hr power
Swimming Pool
Massages
Main Bar & Bar overlooking River
Conference Facilities
Gift Shop
Wheelchair Access

Wi-Fi throughout lodge
24 hr Solar power Electricity
Yes
Yes
Yes
Yes - details to be confirmed by December 2024
Yes
2 Standard Rooms, 1 Family Unit/2 Superior Rooms and public areas are universally accessible

Payment Types Accepted

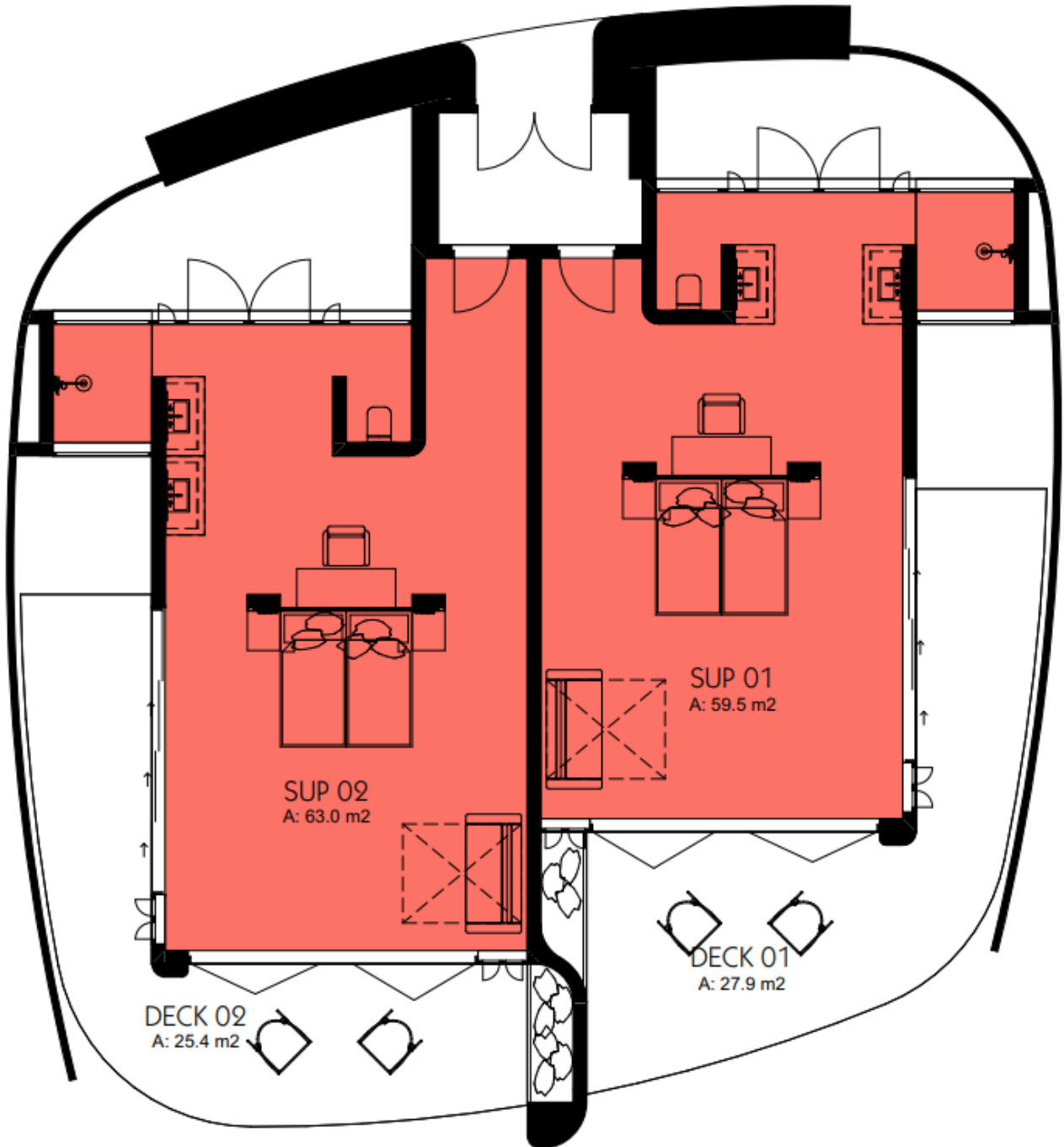
Credit Cards Accepted
Cash
Mpesa payments

Mastercard & Visa
USD are widely used, however, notes dated prior to 2006 are not accepted

Samburu Site Plan

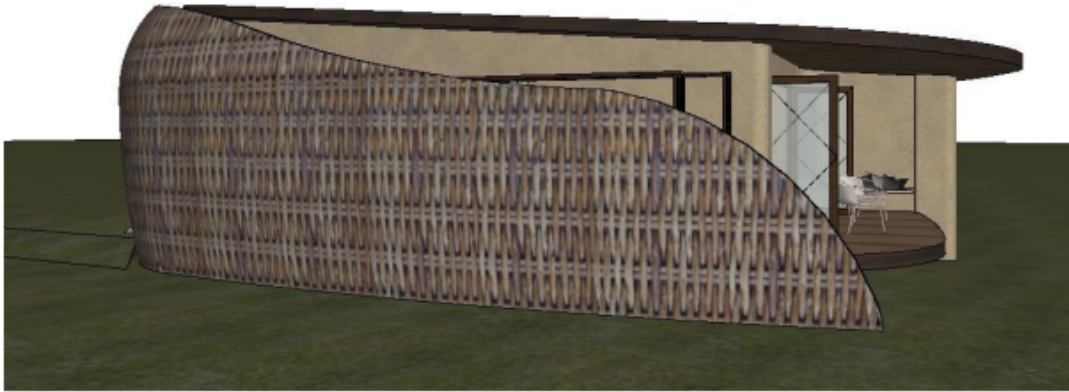


Superior Room 2





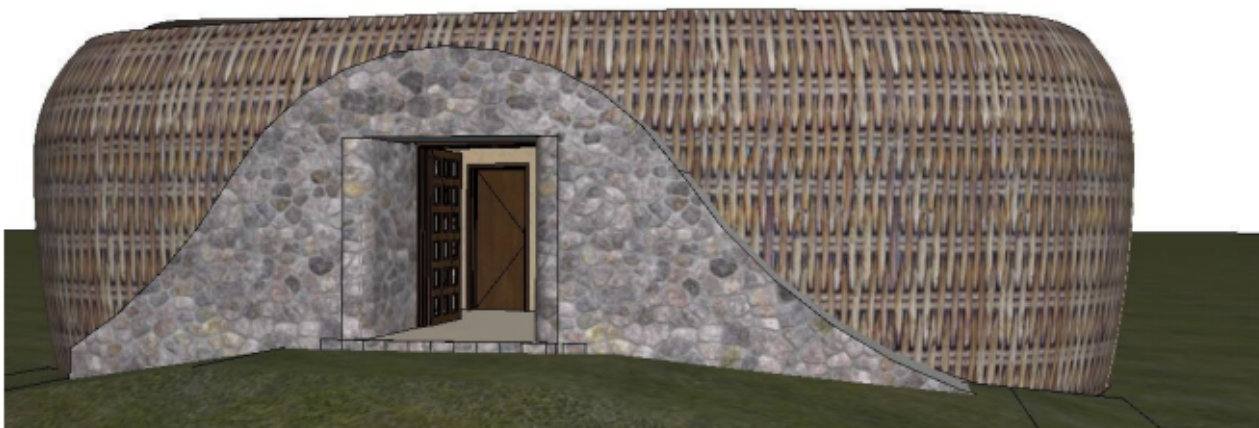
River View



Side River View

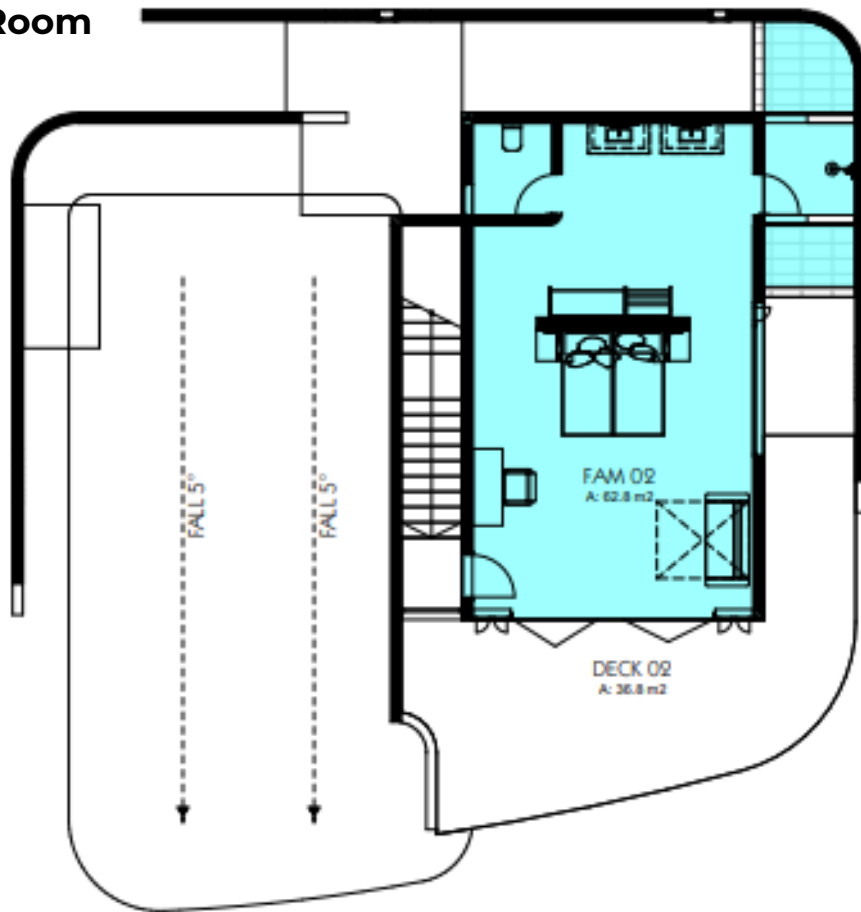


Aerial

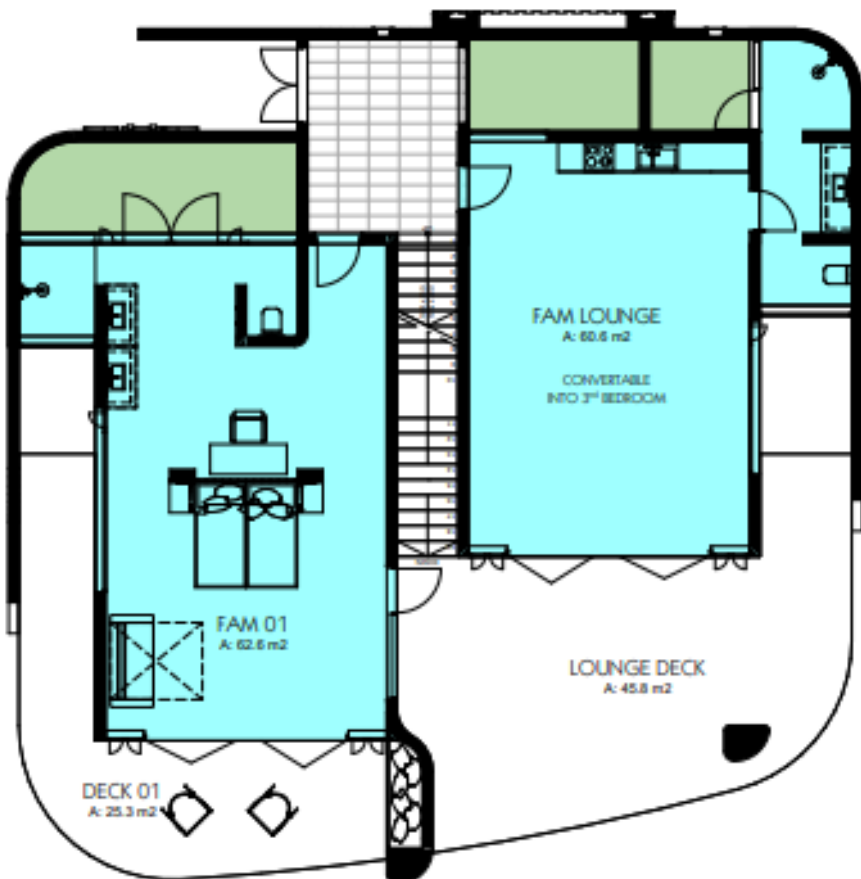


Entry View

Family Room



1. First Floor 1:150



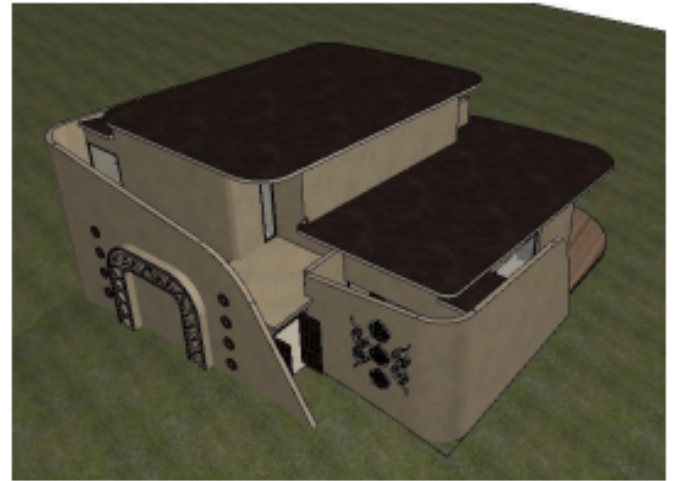
0. Ground Floor 1:150



Side River View



Entry View

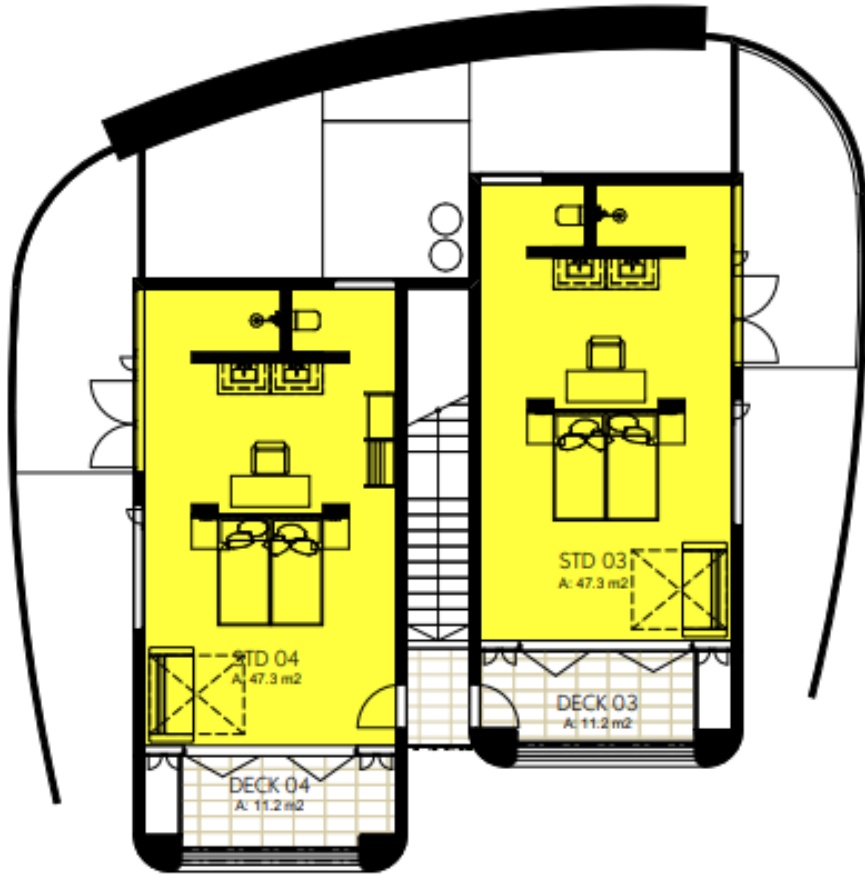


Aerial

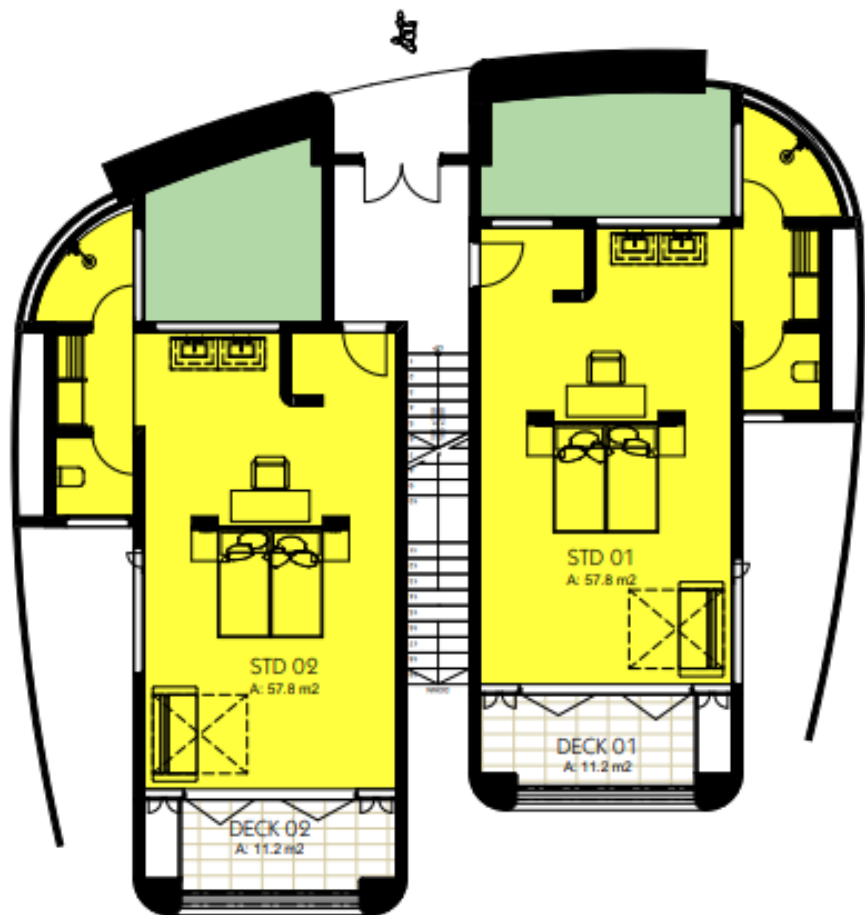


River View

Standard Room 2



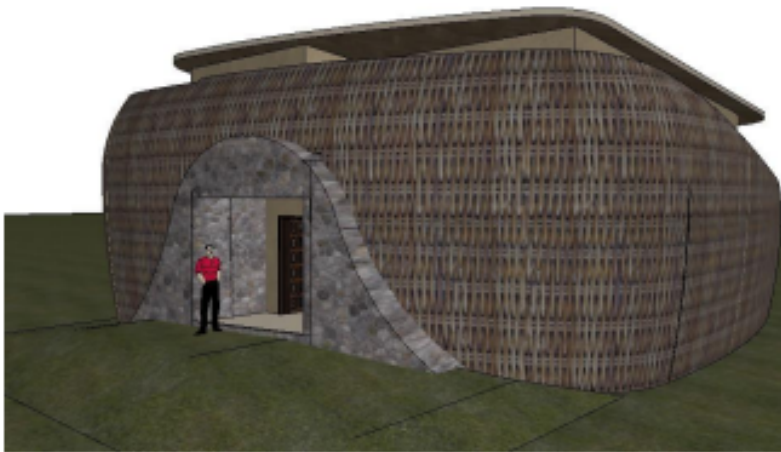
1. First Floor 1:150



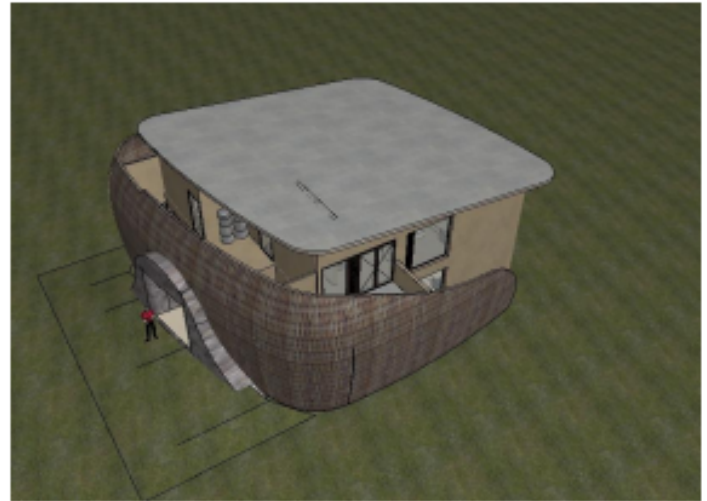
0. Ground Floor 1:150



Side River View



Entry View



Aerial



River View

Standard Room R2.pln